



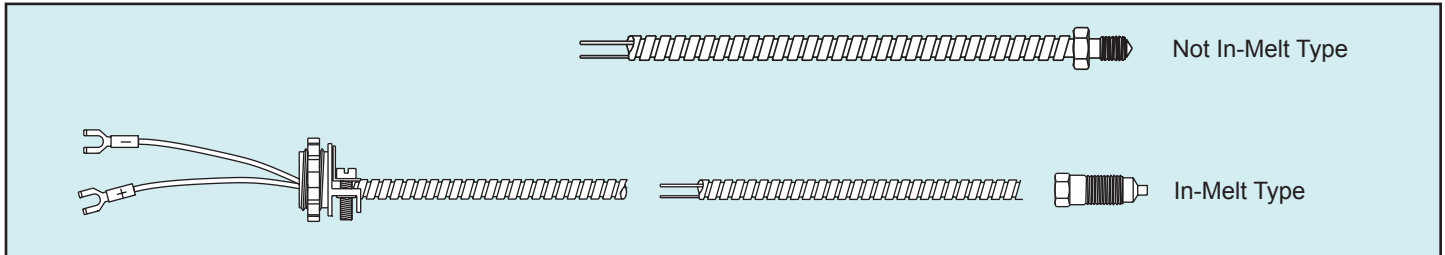
Series
6

Sensors for Extruders and Plastic Machines

Injection Molding Nozzle Type

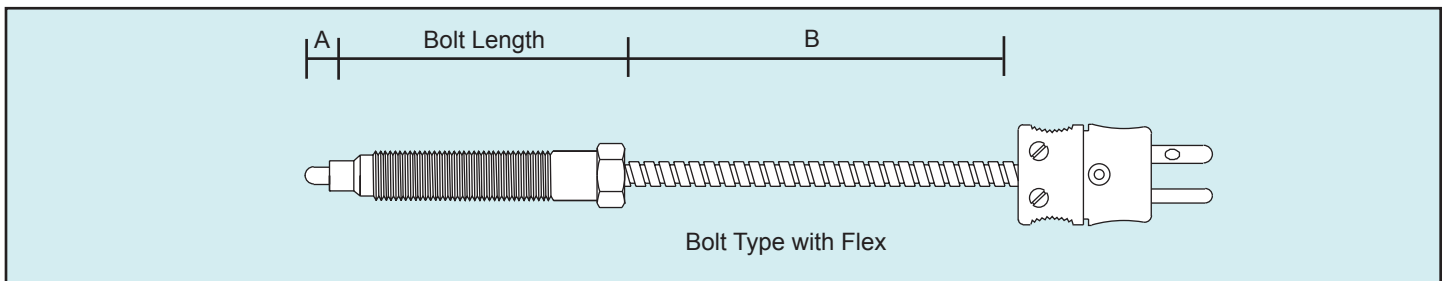
In-Melt type thermocouples and RTD's are designed to bolt into the injector nozzle and sense the temperature of the melt directly, and is rated to 450°C (900°F). The standard 3/8" hex head stainless steel body has 3/8-24 NFT threads. The sensor tip extends 1/8" beyond the end of the bolt assembly. Specify your requirements from the Order Chart below.

Not In-Melt type thermocouples and RTD's are designed to screw into a blind hole in the nozzle, and is rated to 450°C (900°F). The standard 1/4" NFT thread fits most standard nozzles. Specify your requirements from the Order Chart below.



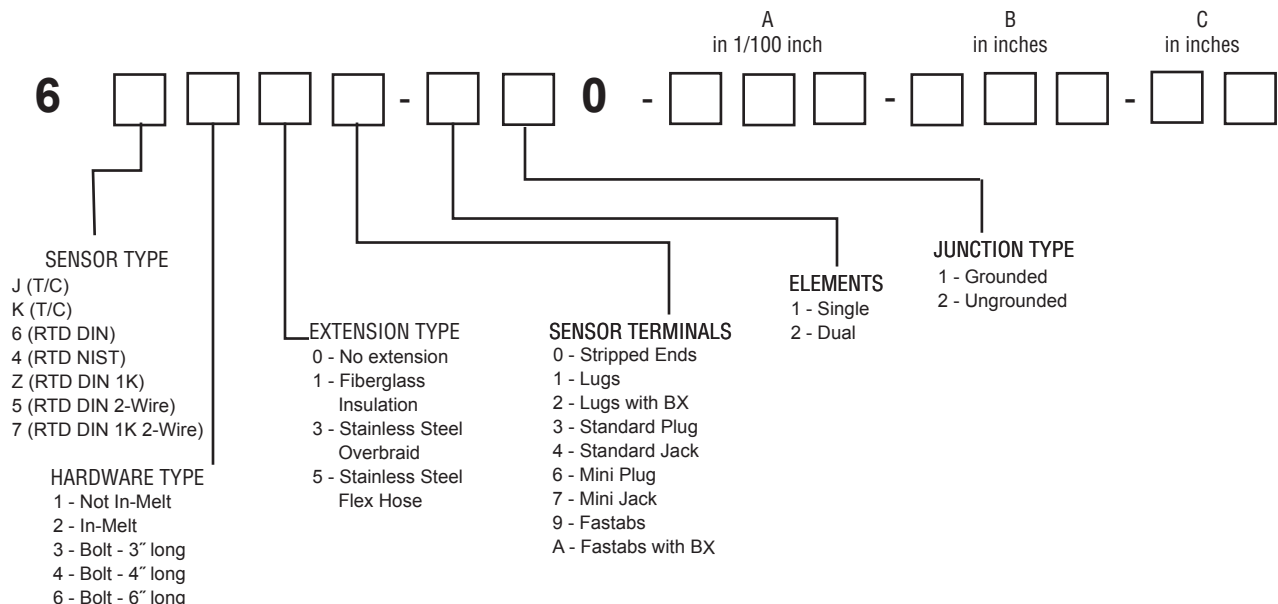
Extruder Bolt Type

Designed for direct mounting into extruder barrels, the Bolt Type thermocouples and RTD's offer easy interchangeability. Standard configuration has a 1/4 inch penetration into the barrel, and industry standard 1/2-20 NF thread. Order options allow barrel penetrations of 0 inches (flush) to 1 inch in 1/100th inch increments (specify as A dimension) and flex extension in 1 inch increments (specify as B dimension). See Special Order Chart below for more details.



Model Coding

Fill in the appropriate numbers or letters to specify the probe of your choice. Fill in all boxes. If an item or dimension does not apply, fill those boxes with zeros '0'.



TEMPERATURE
Temperature Sensors